

HALLAM FIELDS EDUCATIONAL VISITS

Church Visit

Visit a church. Why is this a special place?
Curriculum link:
 Why is the word God so important for Christians
 Why is Easter special?



Farm Visit

Visit a farm, explore animals and their uses. Discuss crops and what they are used for.
Curriculum link:
 Know some similarities and differences between the natural world around them and contrasting environments.



Synagogue Visit

Visit a Synagogue - how does this differ to a church.
Curriculum link:
 Who is Jewish and how do they live?
 Why are places special?



Zoo Visit

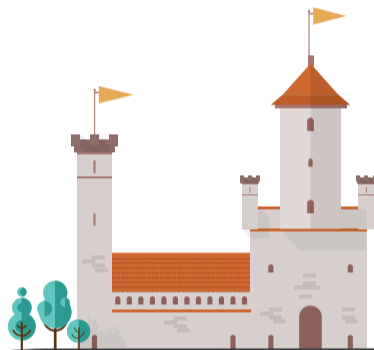
Visit to Twycross zoo. Discover animals from around the world, look at which countries they come from and visit Gruffalo land.
Curriculum link:
 English - The Gruffalo. Retelling a familiar story
 Science - identify animal types
 Geography - find locations on a map



— EYFS —

Castle Visit

Visit to Warwick Castle. Explore a castle and traditional features and step into the realm of Zog
Curriculum link:
 English - Zog. Retelling a familiar story using expanded noun phrases
 History - Castles are built to protect land and people. Part of the castle was built as a defence feature - moat, drawbridge, battlements



YEAR 1

Gurdwara Visit

Visit to a Gurdwara. Explore what happens at the Gurdwara and the many symbols of respect to show when there.
Curriculum link:
 What makes some places sacred?
 Give examples of stories, objects, symbols and actions.



— YEAR 2 —

Jewry Wall Visit

The city's unique Roman collection will be used to tell stories of everyday Roman Leicester and its people enabling visitors to step into and experience what life was like in Ratae Corieltavorum.
Curriculum link:
 The Roman army began to conquer lots of other countries. The Romans built many cities in Britain including London, Leicester and Colchester.

Church Visit

Visit to a Church. Learn about the Creation story and the world Jesus wanted to create.
Curriculum link:
 What do Christians learn from the creation story?
 What kind of world did Jesus want?

Bosworth Battlefield Visit

Tour the exhibition and the battlefield to bring this moment of history to life.
Curriculum link:
 The 'War of the Roses' was a civil war between the houses of Lancaster and York. The Battle of Bosworth was the last main battle.

Mandir Visit

Visit to a Mandir. Learn about the temple, its features and get first hand experience of what it is like to be a Hindu?
Curriculum link:
 What do Hindus believe go is like?
 What does it mean to be Hindu in Britain today?



YEAR 3



— YEAR 4 —

YEAR 5

YEAR 6

Space Centre Visit

A chance to discover the universe and step into space.
Curriculum link:
 Science - the sun, solar system and earth rotations
 History - Neil Armstrong, Katherine Johnson

Mosque Visit

Visit to a Mosque. Learn about the Mosque, the Islamic community and about the religion of Islam.
Curriculum link:
 What does it mean to be a Muslim in Britain today?



Residential

Opportunity to learn new skills, conquer fears and have plenty of fun!
 Develop your communication, teamwork, leadership skills and test your resilience.
Curriculum link:
 Can we develop resilience and confidence?
 Character Education



Warning Zone Visit

Earn life saving skills including e-safety, fire risks, electricity, personal safety and much more...
Curriculum link:
 What will we change as we become more independent?
 How does the media influence people? How do we stay safe online?

